

# TIME CAPSULE OPENING

Original Grand Lodge Building, Natchez, MS



FIRST GRAND LODGE  
BUILDING, NATCHEZ

...I descended t  
...boat, betw  
...Oleoke and 7e  
...that have ran  
...hacking! now  
...of the white  
...; and afte  
...to Clarksville  
...beles more.  
...at the mo  
...with cotton for  
...hearing and d  
...I began, for seveny  
...I took, wh  
...or where you w  
...hear a dissertati  
...Mobile, I was w  
...by two merch  
...the same room,  
...ed. 'They were f  
...; and says one to  
...you do with it? "  
...other, "why, I wo  
...and build a large, fire  
...with the other \$25,  
...and keep it till it rose to  
...sell? But this is only  
...On the 18th  
...a steam k  
...to St. Louis, got  
...and I hear it

...giving way.—  
...to the river; the old one round the  
...points, and the new one across the Isthmus, a  
...greater expansion is given to the water; render-  
...ing the levees more secure, at least in the neigh-  
...borhood of these double channels.  
...All these considerations strike with peculiar  
...force in reference to this important object; and  
...call loudly for some effort to correct the  
...cies of the river.

...the valley of the Mississippi, with all  
...its future material of war could easily be brought  
...to sustain and cover if necessary, the fl ating  
...ramparts of our country.  
...Superadded to this consideration, another  
...would arise important in its prospective relations.  
...Ships might be built; arsenals and dock yards es-  
...tablished and all the preparation for naval con-  
...flict be here made with economy. In our rear  
...are the hemp, iron and coal of K  
...by water transportation are the naval stores; the  
...live oak, the cypress, the yellow pine, white

PI STATES

GAZETTE

# STATESMAN,

AS WE FIND THE  
**FRIDAY**  
 AND OF THE  
**TUMBLE**

he was as careful of it hold in  
 that of others, could press  
 catch him—that lib- and Pen  
 by his life, and wh- ever heart,  
 to deprive him of it The  
 their blood with his made  
 stood that what B-lys  
 -and as well ascer- visis  
 ame among us to pe- minates  
 ds, that he gener- reason;  
 a band of refugees, we are  
 the neighborhood, to active ag  
 accomplishment of p-ness.

many who resolved the creat  
 he the danger what im-  
 effectual attempts were- pulse is  
 se. But he eluded all- v-ns us  
 ll sometime in the win- whom we  
 hen a suspicious stran- it seldom  
 the neighborhood, in fortune ar  
 well armed. Cory and deprive us  
 tion from Fulmer, im- it  
 enselves, together with  
 ded in pursuit. They  
 circuitous track to the  
 ly consulted a moment,  
 en effort, bursing open  
 upon him, and seized  
 any opportunity to ef-  
 He was at his meal, ved my fatie  
 g on the table and his and whilst I  
 firm—he made an at- teenth year,  
 the latter, but not hav- most of which  
 ution to undo the de- industry, and  
 over the lock, he did too unsuspec  
 -less—and to escape unworthy of it  
 the notorious Betty's, cessary sacrific  
 his and foiled in his difference, unti  
 ution, was obliged to mischief was m  
 and quiet prisoner to had anticipated  
 having of Fulmer, Cory wreck, which he  
 estate was liquida-  
 tion of his

OF THINGS AS THEY ARE  
Etc. 1827.

# B I I

hold my approbation of the  
present, as to the conduct of  
Mr Perkins—and I second it  
with

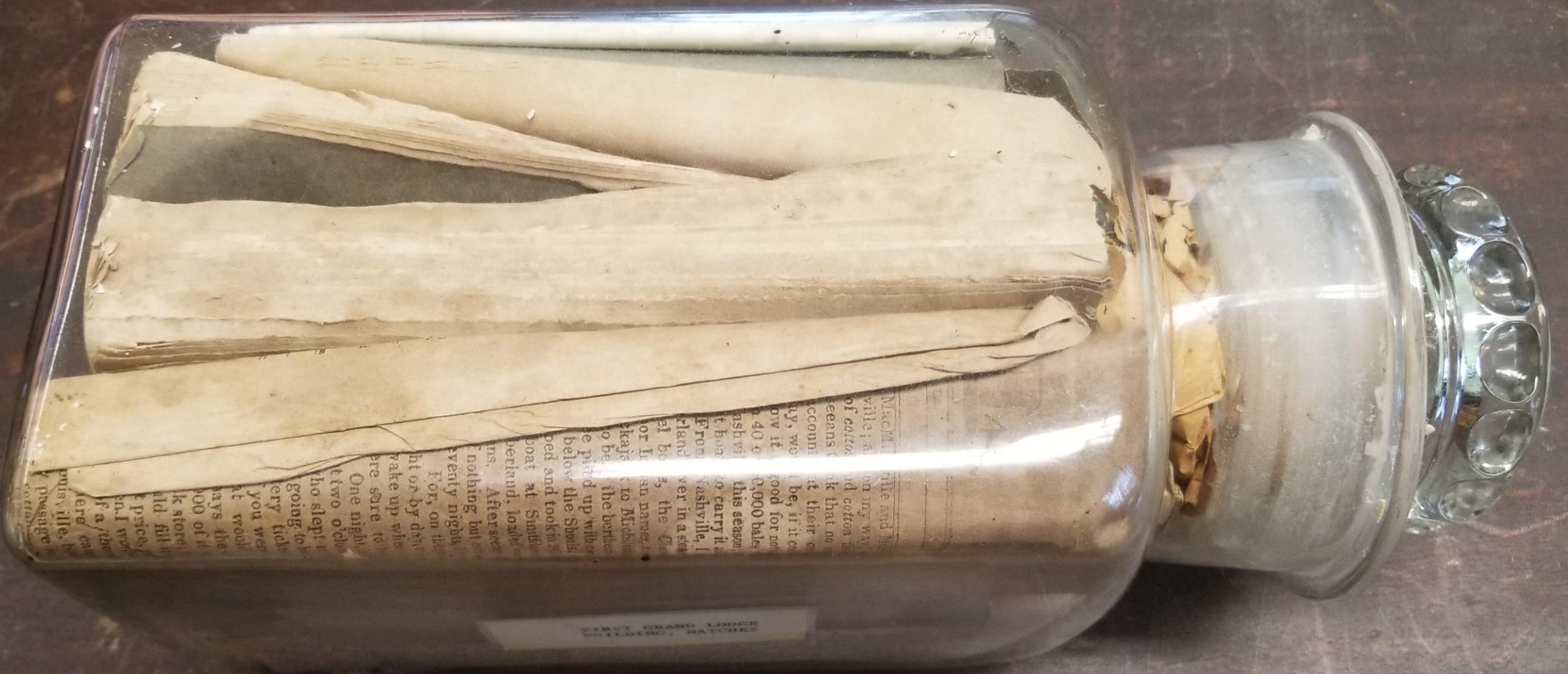
## The Return Home.—

The  
ship of chequered scenes  
scenes over happiness, and  
and in the different  
we often find oursel  
agents in producing ou  
We are undoubtedly  
tures of impulse, th  
is always at home wil  
is at pleasure; whil  
whom we know not th  
too seldom entertain  
real, by being do  
happens that when  
so numerous and  
of real cause of con  
fasten on some shad  
; until it becomes  
; is a case in poin

stances which are p  
and unnecessary to ret  
er at a late period  
I was just enterin  
of a considerable  
which he had acquire  
My father m  
ngly reposed in o  
it. My father m  
of his prober m  
in him, with a  
it became evid  
one wide spread  
; and that his  
had hoped to sa  
so be swallowe  
s unfortun

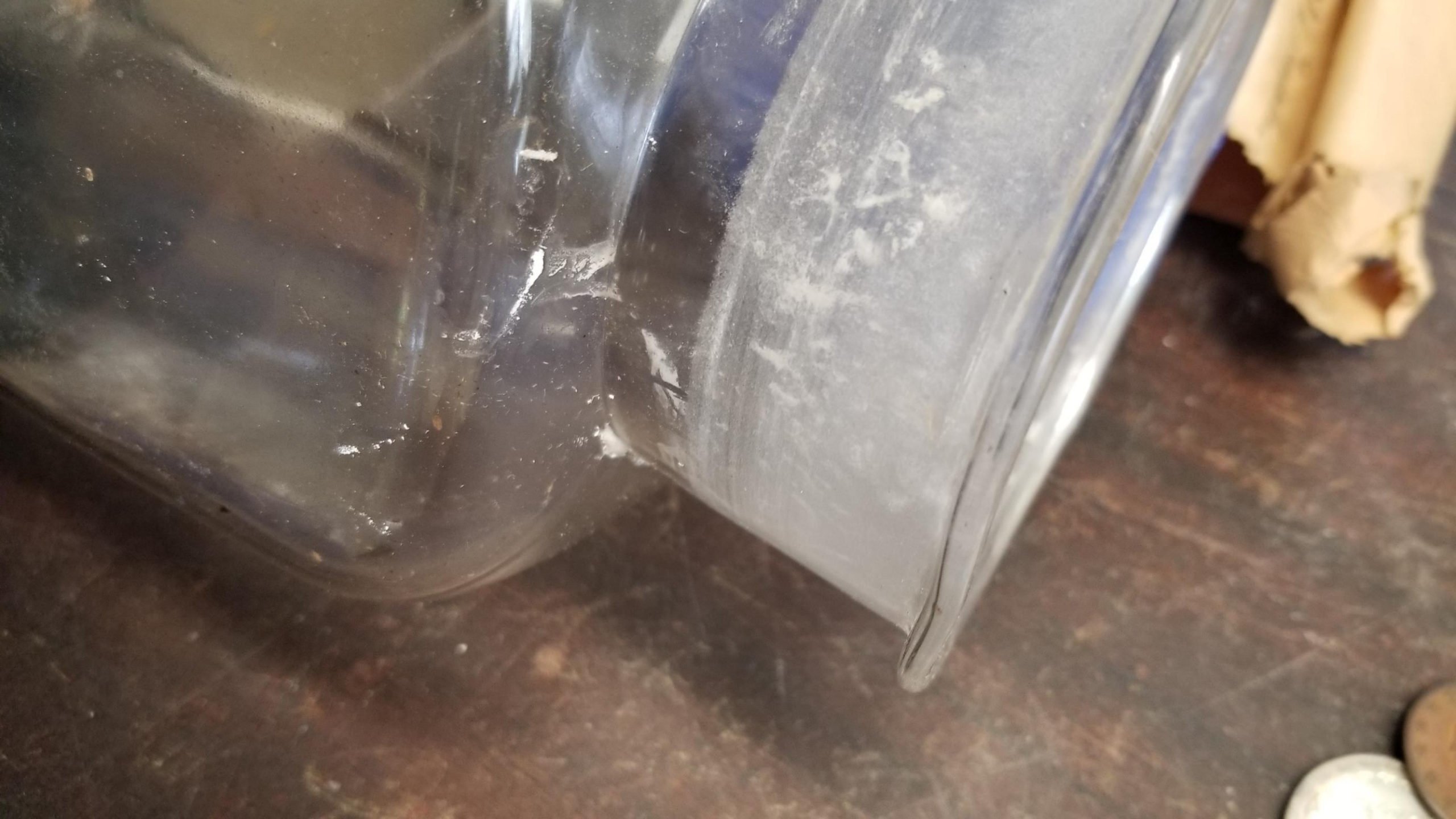
TOUS VOUS  
CHIFFRE  
THESE DEUX DE CHIFFRE

every  
me a  
afice  
in h  
tribe  
ma



MacM...  
 ville; a...  
 of cotton...  
 seems...  
 account...  
 ny, wo...  
 40 g...  
 ashvi...  
 t, boar...  
 From...  
 land...  
 el bo...  
 or in...  
 skays...  
 o be...  
 se pit...  
 below...  
 ped and...  
 coat at...  
 berland...  
 ns. After...  
 nothing...  
 twenty...  
 For, on...  
 ht or by...  
 wake up...  
 ere stare...  
 One night...  
 t two o'clock...  
 who slept...  
 going to...  
 every tick...  
 at you we...  
 says the...  
 000 of...  
 k store...  
 ld fill...  
 price...  
 en. I wo...  
 fa, the...  
 here can...  
 pus, the...  
 passage...  
 cotton...

STREET GRAND LODGE









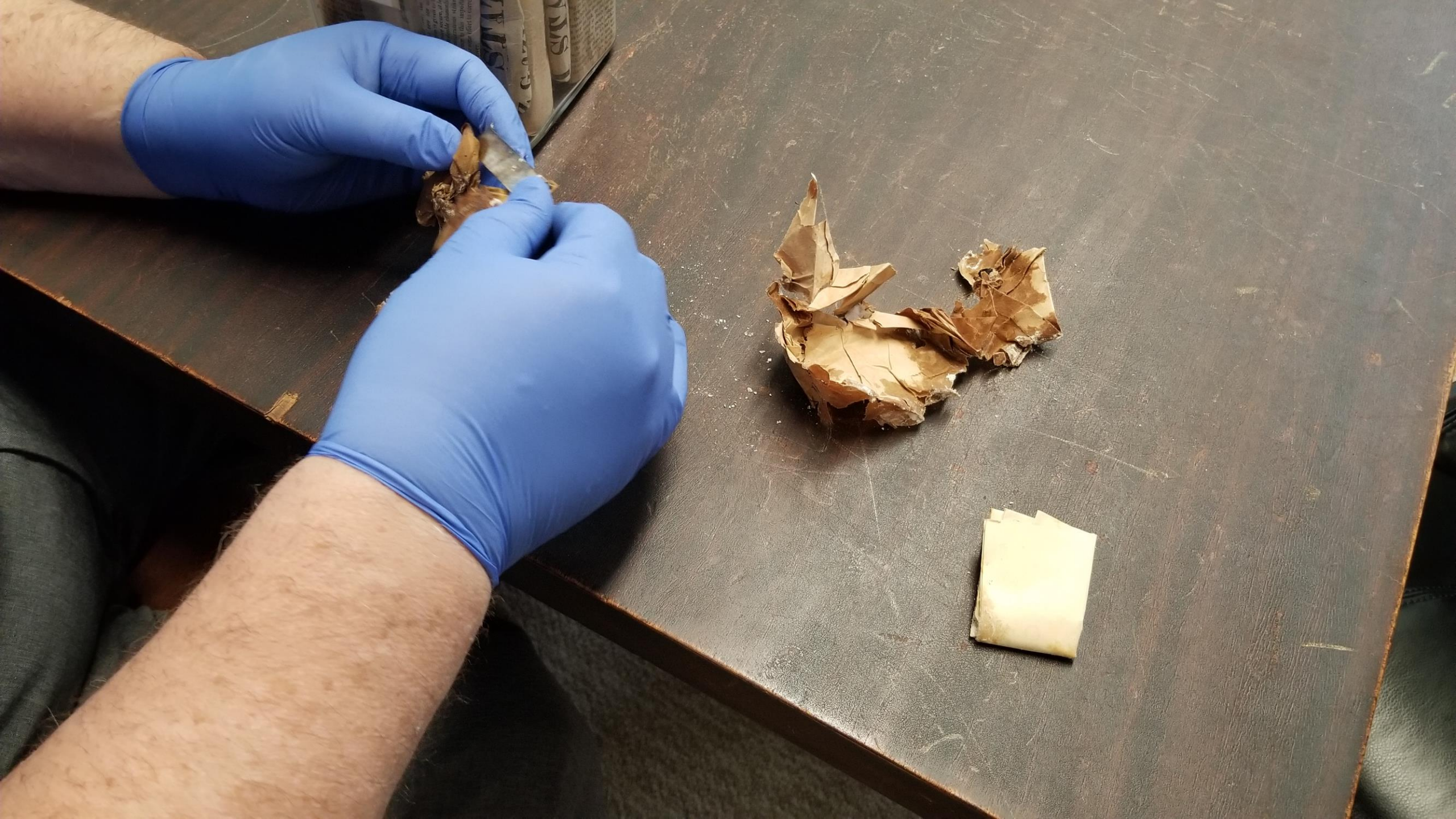






Journal from  
Coxsack & Stone.









FIRST GRAND LODGE  
BUILDING, NATCHEZ

GRAND CHAPTER OF MISSISSIPPI  
R. A. M.

OFFICE OF THE GRAND TREASURER

NATCHEZ, MISS.

Feb 22/1941

Foggo Dixon  
Who received the old contract of  
Corner Stone that was deposited in 1827  
was raised in June 1890 to build a new  
Building which was destroyed by fire  
in 1911 - the original contract of Corner  
Stone was placed in a bottle which was  
broken and after years we are so  
glad it had to be re packed in a new  
Bottle and as I had presented them to  
the Grand Lodge of Miss & Repacked them  
& presented them the 22 day of Feb 1941  
Addressed  
Foggo Dixon

FIRST GRAND  
BUILDING,

GRAND CHAPTER OF MISSISSIPPI  
R. A. M.



OFFICE OF THE GRAND TREASURER

W. FOGGO DIXON  
GRAND TREASURER

NATCHEZ, MISS.

Feb 22/1941

Foggo Dixon

Who rescued the old contents of  
Corner Stone that was depastided in 1829  
was raised in June 1890 to build a new  
Building which was destroyed by fire

EARNED, PRESIDENT.

A. C. BRITTON, TREASURER

DAVID M. DIX



**NATCHEZ COTTON MILLS**  
**COMPANY**

*Natchez, Miss. May 15 1890*

*This jar, containing relics taken  
 from the corner-stone of the*



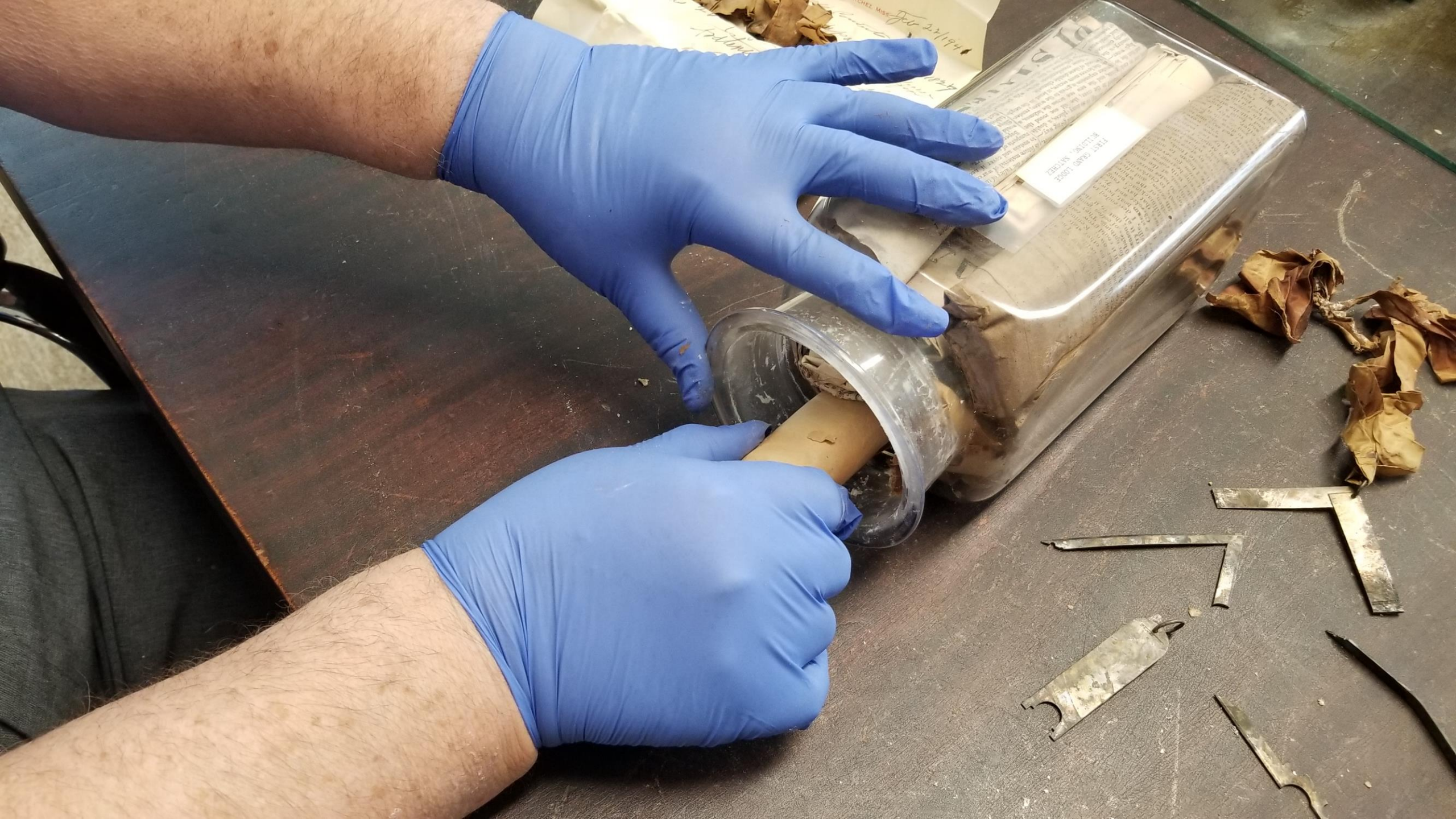
# SUSPECTED TIMELINE

1827 : Time Capsule sealed into the cornerstone of the first Grand Lodge Building in Natchez

1890 : Temple demolished for the purpose of constructing a new building on the same site  
Corner-stone is raised  
Time Capsule retrieved & resealed

# SUSPECTED TIMELINE

- 1911 : New Masonic Temple burned  
Broken Time Capsule retrieved
- 1941 : Contents placed into new jar, sealed, and  
presented to the Grand Lodge of Mississippi
- 2018 : Jar opened and examined by Most Worshipful  
Grand Master Thomas Cumberland



FIRST EDITION  
1902

Miss Feb 22/1904

Photos of old Temple.















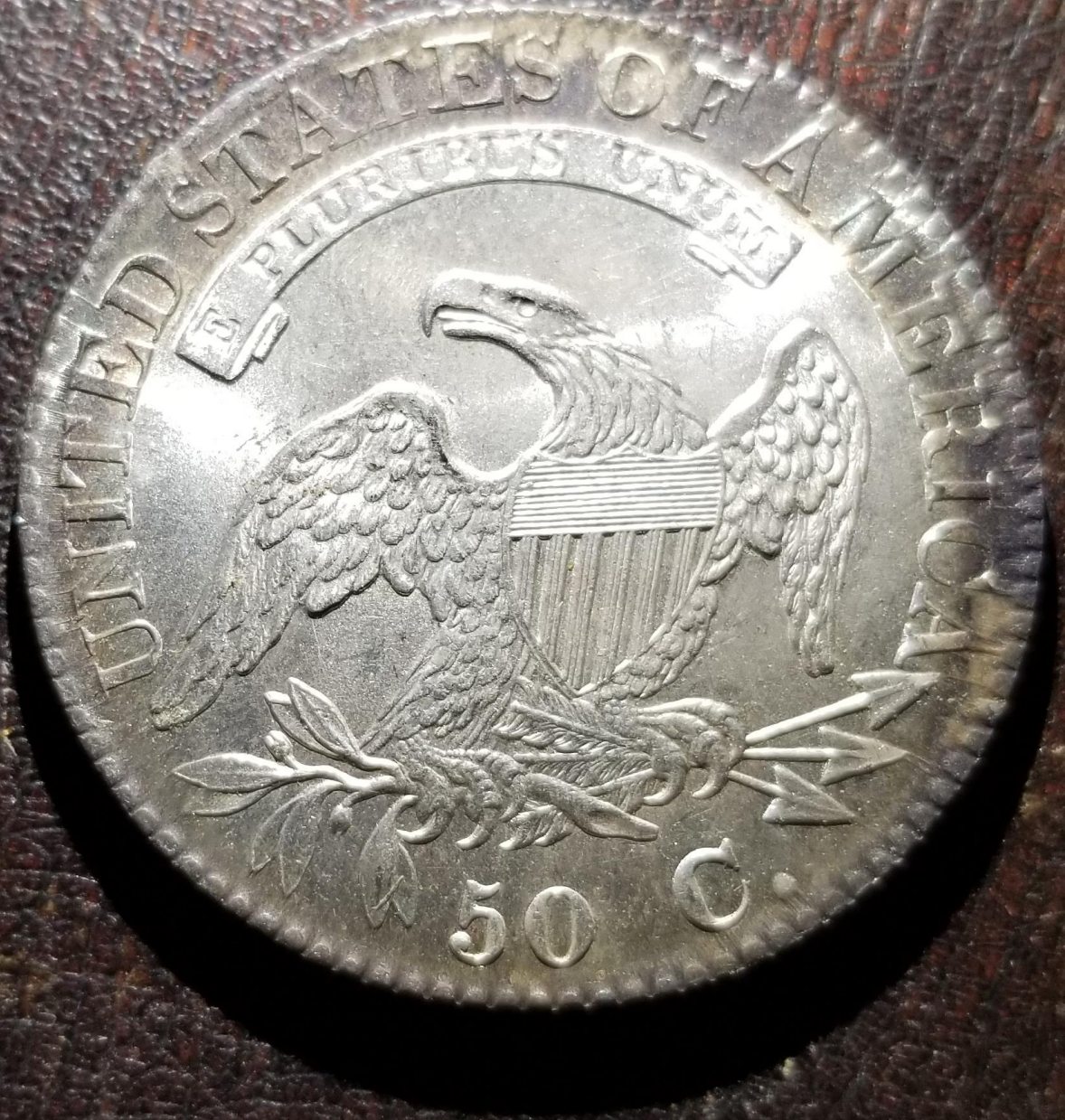
Know all men by these presents Whereas I William  
Provan Physician in Natchez and State of Mississippi have  
made and do hereby make and declare this to be my will  
I the said William Provan being in good health of body  
and of sound mind and memory I give and bequeath  
~~it~~ to that member of the Grand Lodge of the State of Mississippi  
who has the longest name the coins which I have herein  
deposited; the same to him to have and to hold and  
to his heirs for ever. In testimony of which I have

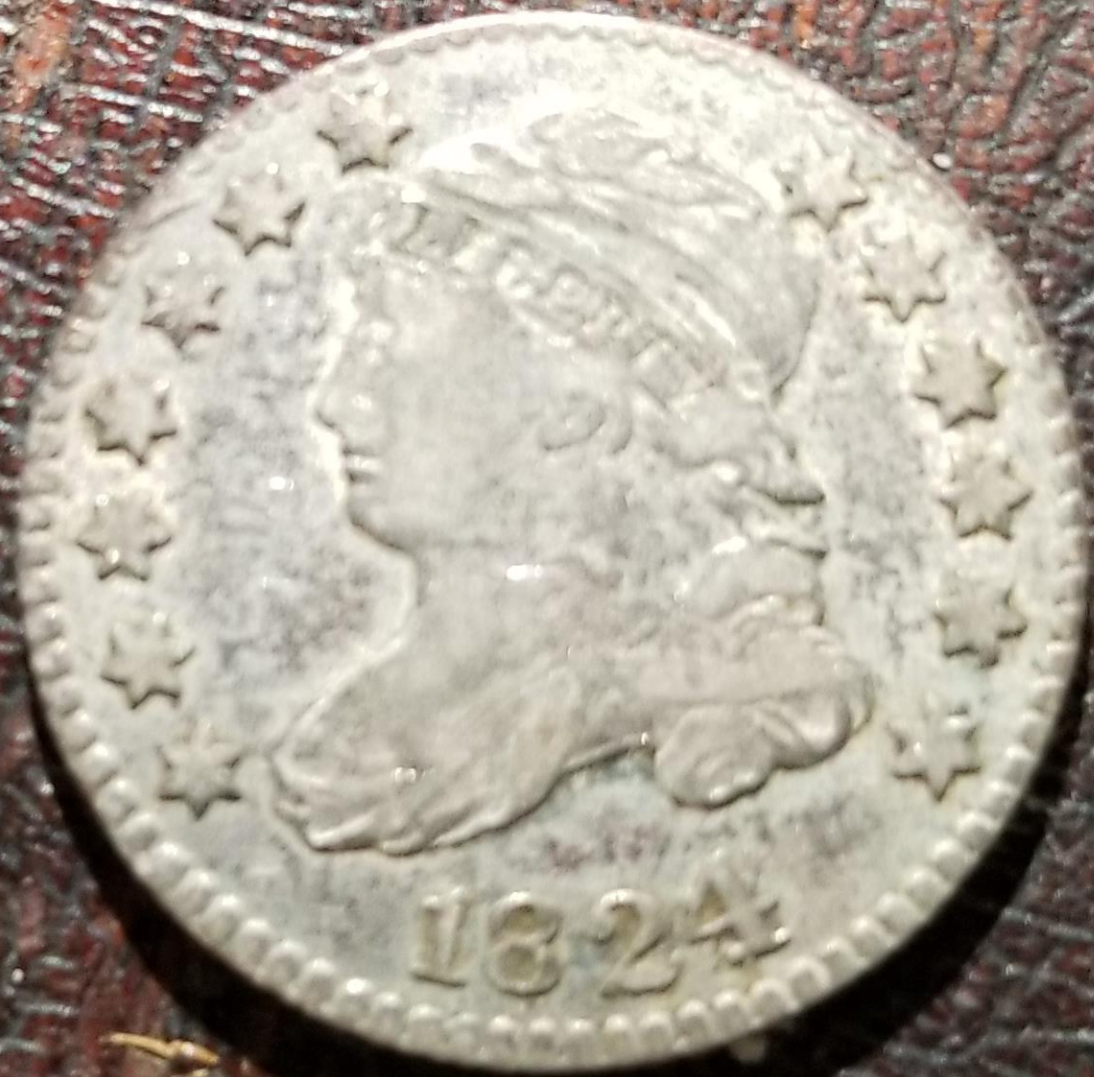
May our happy government  
exist in full vigor as long as  
these coins shall last!!!!

P.S. Which I very much doubt!!!!













brought to light  
A zinc box containing a wooden one  
which held three jewels of the order,  
and a small one with corn, wine and  
oil.

A fifty-cent piece of 1824.

Quarter bearing date 1825.

One cent, 1826.

Half cent of 1807.

Proceedings of Grand Lodge, 1825.

Two copies of Ariel, June 8th 1827.

Three copies of Mississippi Statesman,  
May 31 and June 21 1827.

Natchez Gazette, May 24, 1827.

Order of laying of corner stone.

Order of procession.

Almanac of 1827, published by Wm.  
L. Willeford.

Silver dollar, 1799.

Plan of the city of Natchez, by Joseph  
Green.

Almanac of 1827, published in Natch-  
ez by Elyisha Middlebrook.

Copy of the Holy Bible, which was  
utterly decayed.

The will of Wm. Provan, Gr., Junior  
Warden, in which were enclosed a num-  
ber of silver coins, bequeathed by him to  
the member of the Grand Lodge who  
had the largest nose.

All of the other publications were  
fresh in appearance and bore no signs  
whatever of age.

Upon a careful

CONSTITUTION

AND

BY-LAWS

OF THE

GRAND LODGE

OF THE

State of Mississippi.

NATCHEZ.

PRINTED BY ANDREW MARSCHALK,  
1825.

# THE

# ARIEL.

FRIDAY, JUNE 8, 1927.

WE SPEAK OF AS WE FIND THEM, AND OF THINGS AS THEY ARE UNFOLDED TO US.

NOTIONS  
MAN AND AMERICAN  
PUBLICATIONS.

BROKEN HEART.

I never heard  
of the tales of romantic  
poets and noy-  
al existed in real life.

She never all the cheerful exercises that  
gladden spirits, quicken the pulses,  
and send a tide of life in healthful cur-  
rents through the veins. Her rest is brok-  
en—the rest refreshment of sleep is poi-  
soned by melancholy dreams—"dry sor-  
row dwells under the least external assail-  
ment, and you think for her, after a little while,  
who late were, and wondering that one,  
of health and beauty, should now be  
brought down to a world of darkness and the worm.

You will find a slight  
no one would have  
her so easily and  
and beauty of form,  
worm prey to the spoiler.

To render her widowed situation more  
desolate, she had incurred her father's  
displeasure by her unfortunate attachment,  
and was an exile from the paternal  
of friends have reached a spirit  
and driven in by horror, she w  
experienced no want of consult  
the Irish are people of consult  
ishing attentions were paid her by fam  
of wealth and distinction. She was lo  
into society, and they tired, by all kinds  
her grief and weariness, to dissipate  
story of her loves. But it was all in vain.  
There are some strokes of calamity that  
scath and scorch the soul—that penetrate  
to the vital seat of happiness—and blast it,  
never again to put forth frequent the haunts  
She never objected to frequent the haunts  
of pleasure, but she was as much al  
there, as in the depths of solitude  
walked about in a dazed rev  
unconscious of the world  
carried with her an  
ed at all the beaut  
and "headed  
charm he

It was on her  
composed the  
She is far from the  
And lovers avo  
But coldly she tur  
For her heart is  
She sings the wild  
Every note whi  
Ah! little they thi  
How the heart o  
He had lived for h  
They were all th  
soon shall the  
long will bi

prevents its tang  
deity. I am a tang  
doctrines. Shall I  
of broken hearts, and  
of dying of disappoi  
never consider it a  
my own sex; let it  
waters down many a  
early grave.  
measure of interest  
leads him to  
of the world  
in the intervals  
of the day, for

in its grove: graceful in its  
of foliage, but with the  
withering, when it should  
and luxuriant. We find  
branches to the earth, and  
it falls, until, wasted and  
of the forest; and as we  
the man, we strive in vain to recol  
the vast or thunderbolt that could  
I have seen many  
run down to waste and  
appearing gradually  
as if they had been  
and have repeatedly  
cross their deaths through  
of melancholy  
Th

Mississippi & Louisiana

ALMANAC,

FOR THE YEAR OF OUR LORD,

1827;

Being the third after Bissextile or Leap Year, and the  
50th & 51st of American Independence.

CONTAINING,

The Motions of the Sun and Moon—the true Phases  
and Aspects of the Planets—the Rising and Setting  
of the Sun—the Rising and Setting of the Moon—  
Solar and Luner Eclipses, &c. &c. &c.

CALCULATED

For the Horrizon of Natchez Mississippi.

By WILLIAM L. WILLEFORD,  
Maury county, Tennessee.



NATION'S

GUEST.

NATCHEZ:

Printed and Sold by ANDREW MARSCHALL  
also sold at the Drug Stores of F. BEAUMONT, Ma  
Street, and T. GAMBLE, Commercial Row.

# ORDER

## OF THE PROCESSION AT LAYING THE CORNER STONE OF THE MASONIC HALL,

On the 25th June, 1827,

MUSIC,

*Five paces in advance.*

TWO TYLERS,

*With drawn Swords.*

TWO STEWARDS,

*With white Rods.*

MASTER MASONS,

*Marching two and two with blue sashes.*

ROYAL ARCH CHAPTER,

*Marching by threes, and preceded by their centinel with drawn sword.*

GRAND LODGE,

*Preceded by their Grand Tyler, followed by the Holy Bible, the Grand Master in the rear.*

After the ceremony of laying the corner stone is over, the procession will observe precisely the same order in proceeding from thence to the church, and in returning from the church to the Lodge Room.

**James Smith,**

Grand Marshal.

# ORDER

## Of the ceremony of laying the corner stone of the Masonic Hall,

ON THE 25TH OF JUNE, A.L. 5827.

1. The *Grand Lodge* will convene at the court-house at 10 o'clock, A. M.
2. The procession will be formed at 11 o'clock, and proceed to the site of the Hall.
3. After silence commanded by the Grand Marshal, a prayer by the Grand Chaplain.
4. Solemn music.
5. A short address by the Grand Master.
6. The relics will be deposited under the stone.
7. The stone will then be laid with the usual ceremonies.
8. Music, (Pleyel's hymn.)
9. The vessels of *corn, wine and oil* will then be handed to the Grand Master, and the stone consecrated, with some remarks.
10. After the *stone* shall have been struck, the Masonic honors will be given and flourish of music.
11. The working tools are then presented to the *Architect*.
12. Music.

The procession will then again be formed and move to the Episcopal Church, where a prayer will be made by the Grand Chaplain, and an address delivered by the Grand Orator; after which the procession will return to the Lodge Room.

**John A. Quitman, G. M.**

*Naichez, June 15, 1827.*



THE  
FOUNDATION STONE  
OF THIS

**BUILDING,**

ERECTED TO GOD AND DEDICATED TO THE HOLY ST. JOHNS,  
WAS LAID WITH  
Solemn Masonic

# TIME CAPSULE OPENING

Thank You



<http://msgrandlodge.org/time-capsule>